

MENEGOTTI TECHNICAL MANUAL

BACKPACK CONCRETE VIBRATOR GXH50

Model: 29861100

ATTENTION:

Read this technical manual before operating Menegotti equipment. It will inform and instruct the operator about the operation. This also helps to avoid possible work accidents and premature maintenance of the equipment.

MGT

NORTH AMERICA 

mgtamerica.com



Scan the QR Code for the updated
online version of Technical Manuals
and Parts Catalogs, or go to our
website mgtamerica.com



Congratulations on purchasing a MGT product!

With the highest quality, designed and built mainly to serve you with technology to suit your needs.

This manual was written to provide you with the information and instructions necessary for using and maintaining the equipment and to present you with data relating to its technical characteristics.

Before you put your equipment into operation for the first time, carefully read the information contained here.

The durability of your equipment depends on the way you handle it during service (operation) and its satisfactory performance result from your careful work, carried out regularly following the recommendations presented in this manual.

Menegotti is ready to offer you all the necessary technical assistance and supply spare parts.

Welcome, you are now a part of the great Menegotti “client family.”

MGT North America
After Sales and Technical Assistance Departments.

Caution: For the best convenience, keep this manual in an appropriate place where it can be consulted when necessary.

INDEX

The Menegotti Group	3
Introduction	3
Safety Information	3
Technical Specifications - Backpack	5
Technical Specifications – Flexible Shaft & Vibrator Head	6
Instructions For Safe Operation	7
Condition of Use	8
Operation and Maintenance	9
Wear Measurements for Diameters and Lengths on Vibrated Heads	10
Periodic Maintenance of Heads and Transmissions	10
Troubleshooting	11
Instructions for Ordering Spare Parts	12
Recommendations for Use	12
Product Warranty	13
Term of Warranty	14

The Menegotti Group

Menegotti is a recognized leader in designing and developing equipment and tools for the construction, material handling, and lawn and garden sectors.

Menegotti is a Brazilian company headquartered in Jaraguá do Sul, Santa Catarina. It operates in Brazil and the United States and products in more than 40 countries.

With over 80 years of history, Menegotti is now under its fourth generation of consistent and successful family leadership.

As a national leader in concrete and cement mixer sales, Menegotti stands out in the resale and equipment rental markets.

Through its Innovation Program, Menegotti promotes creativity and competitiveness by driving disruptive initiatives and strategic partnerships focused on ongoing professional and business development.

Menegotti's organizational culture supports continuous professional and personal growth. The company actively participates in sustainability initiatives that bring its mission to life to help build a better, more sustainable world.



Introduction

We strongly recommend reading and understanding this manual's safety, maintenance, and operating guidelines to ensure optimal performance from your vibration equipment.

Replace any defective parts immediately to prevent further issues. Following the instructions in this manual will help maximize uptime and ensure reliable operation.

Safety Information

Operational safety

Safe operation of the machine requires familiarity with it and training. A machine operated improperly or by unauthorized persons can be dangerous. Training is the employer's responsibility and must be provided by a qualified professional.



NEVER permit untrained persons to operate the machine.

ALWAYS read, understand, and follow the procedures in the instruction manual before attempting to operate the machine.

ALWAYS ensure the operator knows the appropriate safety precautions and operating techniques before using the machine.

ALWAYS prepare the workplace in such a way as to prevent accidents at work, following the guidelines in this manual and the specifications of current safety regulations.

NEVER operate the machine in applications that are not intended for its function.

NEVER alter or turn off the operating and safety functions.





NEVER use accessories not recommended by Menegotti for the machine. They could damage the machine and/or injure the user.

We will NOT take responsibility for any accident caused by modifications to the machine, which will result in a loss of warranty.

ALWAYS use caution and common sense when operating the machine.

ALWAYS contact MENEGOTTI immediately at 770-910-7450 to replace damaged or missing parts.

ALWAYS inspect the machine daily when it is switched off. The machine cannot be used if there are any signs of damage. In the event of problems, contact MENEGOTTI Authorized Service immediately.



ALWAYS prepare the workplace to prevent accidents, following the guidelines in this manual and the safety regulations in force.

ALWAYS ensure that all persons are at a safe distance from the machine. Stop the machine if people enter its working area.

ALWAYS keep the machine out of the reach of children.

ALWAYS isolate the working area from the machine and keep it clean, free from obstruction, and well-lit.



NEVER leave the machine running unattended.

ALWAYS switch off the machine when it is not being operated.

ALWAYS wear protective clothing when operating the machine, including safety glasses or goggles, ear protection, and safety shoes.

ALWAYS keep hands, feet, and loose clothing away from moving parts of the machine.

ALWAYS avoid contact with the rotating parts of the machine.



ALWAYS ensure that electrical installations comply with current safety regulations.

ALWAYS avoid the extension cord touching the ground, especially if it is wet.



ALWAYS inspect all extension cords before connecting them to the mains. Do not use bare, broken, or spliced cords

NEVER connect multiple machines to the same socket and/or power strip.

“T” connections are NOT recommended.



NEVER pour water on the motor and other electrical parts when cleaning the machine

NEVER operate the machine in the rain.

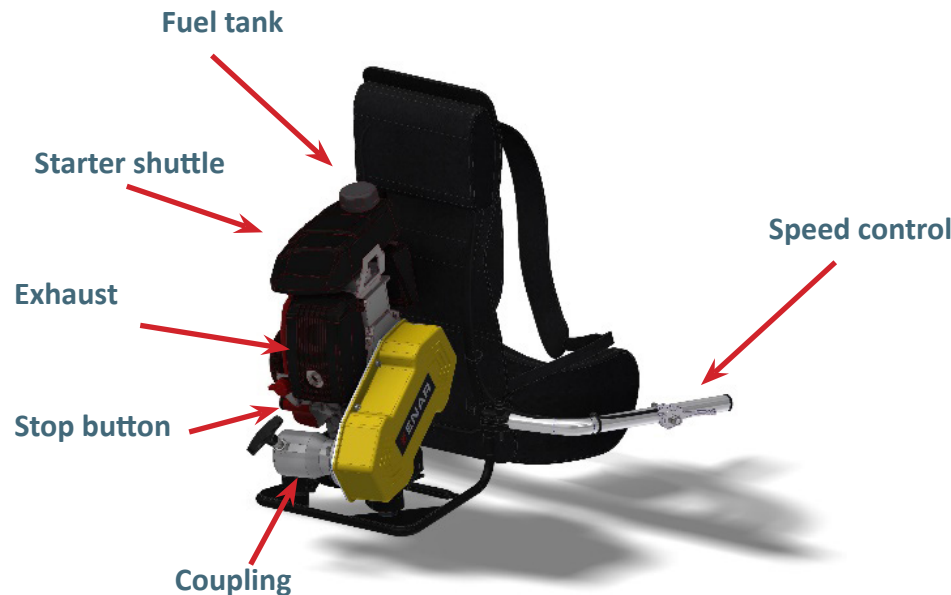
ALWAYS disconnect the machine from the mains before inspecting, cleaning, or performing maintenance.

ALWAYS inspect the machine's electrical panel, check its insulation, and operate with a closed enclosure.

Technical Specifications - Backpack

ENGINE	HONDA GXH50
POWER	4 STROKE 49CC
MAX RPM.	2.1 HP 7000 RPM
ON	TRANSISTORIZED
START-UP	RECOIL STARTER
FUEL	GASOLINE
DEPOSIT	770 CC
WEIGHT	28 LB / 12,7 KG

SPEED 9,000 - 12,000 RPM
WEIGHT 12.7 KG (BACKPACK)
APPLICATION Transmit the movement to an internal vibrator through flexible



NAME PLATE

ENARCO, S.A.U.	BACKPACK O
C/ Burtina, 16	XXXXXXXXX
50197 Zaragoza	10/2024
(SPAIN)	
MADE IN SPAIN	
	12,7

Technical Specifications – Flexible Shaft & Vibrator Head

APPLICATION:

When connected to the motor, the transmission drives an eccentric mechanism inside the needle, generating the internal vibration required for compacting concrete.

CHARACTERISTICS OF THE VIBRATOR HEAD

MODEL	DIAMETER Inch (mm)	LENGTH Inch (mm)	WEIGHT Lb (Kg)	CENTRIFUGAL FORCE Lb (Kg)	FREQUENCY (V.P.M)	CAPACITY (m³/h)
AX 1"	1" (25)	14" (356)	1.7 (0.8)	192 (90)	12.000	UP TO 10
AX 1.5"	1 ½" (40)	14" (356)	4.8 (2.2)	840 (380)	12.000	UP TO 17
AX 1.75"	1 ¾" (48)	14" (356)	7 (3.2)	1210 (550)	12.000	UP TO 28
AX 2.25"	2 ¼" (58)	15" (380)	10 (4.5)	1450 (660)	12.000	UP TO 35



CHARACTERISTICS OF THE FLEXIBLE SHAFT



MODEL	LENGTH Ft (m)	WEIGHT Lb (Kg)
TAX-O 3ft	3 (1)	7 (3,2)
TAX-O 5ft	5 (1,5)	8 (3,6)
TAX-O 7ft	7 (2)	9 (4)
TAX-O 10ft	10 (3)	11 (5)
TAX-O 13ft	13 (4)	13 (6)
TAX-O 16ft	16 (5)	15 (6,8)
TAX-O 20ft	20 (6)	18 (8,1)

Instructions For Safe Operation



!WARNING!



READ AND UNDERSTAND ALL INSTRUCTIONS

SAFETY SIMBOLS

SAFETY PRECAUTIONS	
	CAUTION - Before operating this concrete vibrator, read and fully understand the contents of this manual.
	CAUTION - Never operate the machine without its housing. Keep hands, fingers, hair, and clothing away from all moving parts. Do not hold the poker head while the machine is running.
	Always wear approved personal protective gloves.
	Wear approved protective boots.
	Wear certified personal protective equipment for hearing, eye, and head protection.
	DO NOT operate the equipment near flammable substances.

WORK AREA SAFETY



KEEP your work area clean, organized, and well-lit.

NEVER OPERATE powered tools in explosive environments or near flammable liquids, gases, or dust.

KEEP other people at a safe distance while the tool is in operation.

PERSONAL SAFETY



STAY ALERT and use common sense when operating any tool.

DO NOT USE the tool if you are tired or under the influence of drugs, alcohol, or medication.



DRESS APPROPRIATELY —AVOID loose clothing or jewelry.

TIE BACK long hair to prevent entanglement.



KEEP hair, clothing, and gloves away from all moving parts.

PREVENT accidental starts by switching the tool off before connecting to a power source.

REMOVE all adjusting keys and wrenches before starting the tool.

DO NOT EXCEED your physical capabilities

Make sure to eat regularly and stay well-hydrated at all times.

ALWAYS wear the recommended personal protective equipment.

Eye protection is **MANDATORY** when operating the tool

TOOL USE AND CARE

DO NOT FORCE the tool. Let it perform at its intended pace.

Use the tool properly and only for its designated application.

DO NOT USE the tool if the switch does not operate properly or cannot be turned to the OFF (0) position.

STOP the machine before making any adjustments, changing accessories, or storing the tool.

STORE unused tools out of reach of children and individuals unfamiliar with their operation.

KEEP the tool in good working condition through regular maintenance.

CHECK for misalignment, wear, breakage, or other conditions affecting the tool's safe operation.

If damaged, **PERFORM** maintenance or repairs before using the tool.

USE only manufacturer-recommended accessories designed for your specific model.

SERVICE

Tool maintenance **MUST BE PERFORMED** by qualified personnel only.

When servicing the tool, **USE** parts identical to those being replaced.

FOLLOW all instructions in the maintenance section of this manual.

SPECIFIC SAFETY RULES



1. To operate the machine, you **MUST ENSURE** that all operators have been appropriately informed of this manual's contents.
2. **USE** the machine only for specific applications and under the safety guidelines described in this manual.



3. **DO NOT** touch or operate near the engine exhaust while running.
4. **DO NOT** operate the machine near flammable liquids or areas exposed to combustible gases.
5. **DO NOT** allow inexperienced or untrained personnel to operate the engine or its attachments.
6. **MAKE SURE** all screws and fasteners are tight before beginning work.
7. **DO NOT** stop the machine until the concrete has been thoroughly vibrated.
8. **DO NOT** use the equipment if any faults or malfunctions are noticed.
9. **DO NOT** connect the flexible shaft to the engine while it is running.
10. **DO NOT** run the engine without a transmission connected to the output.



11. **DO NOT** operate the engine if the transmission or vibrating needle is damaged, which may cause overheating.
12. **DO NOT** allow untrained personnel to handle the engine or its components.
13. **READ** the engine manufacturer's manual before operating.
14. **DO NOT** use the machine in enclosed or poorly ventilated areas. Exhaust gases are toxic.



15. **ALLOW** the engine to cool for at least 2 minutes before refueling.
16. **ACCORDING** to ISO 3744, the sound pressure level (LpA) at the operator's position is 88.4 dB, and the sound power level (LwA) is 103 dB (K = 2 dB). Use hearing protection.



17. **VIBRATION** exposure from hand to arm is measured at 8.7 m/s² under ISO 5349 conditions, using the AX2.25" needle at full engine speed and suspended in air at 1 meter.

ADDITIONALLY, YOU MUST STRICTLY FOLLOW ALL APPLICABLE FEDERAL, STATE, AND LOCAL REGULATIONS IN NORTH AMERICA.

Condition of Use

Please read and understand the following conditions of use carefully before operating this machine. This manual ensures your safety, the safety of others, and the prevention of equipment damage.

1. Before operating, ensure the transmission-to-engine retaining lever is engaged correctly—it should “click” into place.
2. Confirm the needle is securely threaded into the transmission using a left-hand thread and a wrench.
3. Avoid operating the transmission on sharp curves.
4. Do not over-grease the transmission cable.
5. Do not run the needle outside the concrete for more than 5 minutes.
6. Ensure the vibrator can move freely during operation—do not restrict its movement.
7. Do not stop the needle while the vibration is in progress.
8. Replace any worn tubes or tips promptly to avoid internal damage.
9. Use only the recommended types and amounts of lubricants during maintenance.

Operation and Maintenance

BEFORE STARTING WORK



1. Inspect all handling and safety devices to ensure they are functioning correctly.

2. Read and understand the engine manufacturer's manual.

3. Do not operate in areas with poor ventilation.



4. Ensure there are no flammable materials near the engine exhaust.

5. Verify you filled the fuel tank with unleaded gasoline (for 4-stroke engines).



6. Check that the oil level reaches the maximum mark (use SAE 10W-40 for 4-stroke engines).

7. Tighten all screws and fasteners securely.

8. Start the engine and use the throttle control to adjust speed until you achieve proper vibration.

9. If you notice any issues that may compromise safe operation, stop work immediately and perform the necessary maintenance.

COMMISSIONING

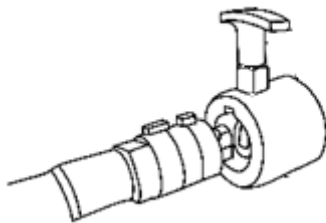
Refer to point 5 above for fuel requirements.

CONNECTING THE TRANSMISSION TO THE ENGINE

The engine is designed to allow quick and secure transmission connection for ease of use.

Connection steps:

1. Connect the transmission shaft to the rectangular housing on the engine.



2. Fit the handle into the coupling groove, ensuring it “clicks” securely into place.



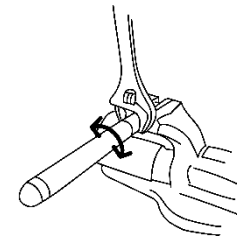
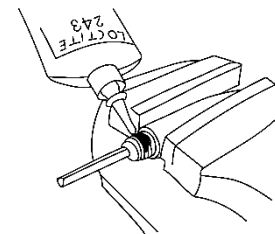
CONNECTING THE TRANSMISSION TO THE VIBRATOR HEAD

Connection steps:

1. Insert the drive finger from the transmission into the square housing of the needle.

2. Apply a drop of “Loctite 243” thread locker to the thread.

3. Thread the needle onto the transmission and tighten it securely using a wrench.



INSPECTION

1. Before beginning work, verify that all handling and safety devices function properly.

2. Routinely inspect the transmission's condition. If the hose is damaged, repair or replace it to prevent damage to the shaft or vibrator head.

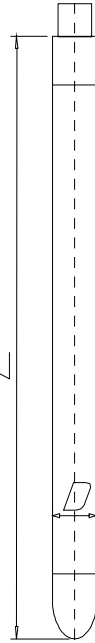
3. Replace any visibly worn components immediately.

4. If you find any defective or compromised safety device or component, report the issue and suspend operation until repairs are completed.

Wear Measurements for Diameters and Lengths on Vibrated Heads

MODEL	DIAMETER (mm)	LENGTH (mm)
AX 1"	23,5 (25)	280 (285)
AX 1.5"	38,5 (40)	361 (366)
AX 1.75"	46 (48)	330 (335)
AX 2.25"	56 (58)	320 (325)

- A. Minimum allowable measurements are shown in bold.
 B. Measurements in parentheses represent original factory dimensions.
 C. Replace the tube as soon as its diameter reaches the minimum specified.
 D. Replace the tip when its length reaches the minimum allowable value.



Periodic Maintenance of Heads and Transmissions



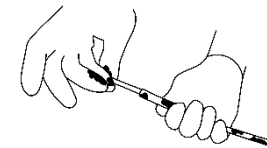
- Daily (Every 8 hours)** Clean the engine, check and tighten all screws and nuts, check and refill the engine oil tank (4-stroke engines only).
- Weekly (Every 50 hours)** Change the engine oil (after the first 20 hours of use), clean the spark plug and air filter.
- Monthly (Every 200 hours)** Clean the oil filter, clean and adjust the spark plug.
- Every 250 hours.** Clean and adjust the carburetor, clean the cylinder head, adjust the valves.
- Use only original spare parts for all maintenance procedures.
- Ensure all safety devices are correctly reinstalled after maintenance or service work.
- Have the equipment inspected by an authorized service center **every 12**

months or more frequently, depending on usage conditions.

- Do not fill the gas tank while smoking, near a flame or other potential danger. Close the fuel valve before filling the tank, use unleaded gasoline, clean up any gasoline spills before starting the engine.
- The engine idle speed must not exceed 3000 RPM (factory setting). When servicing the engine, check and adjust idle speed as needed, refer to the engine manufacturer's manual for detailed speed adjustment, starting, and stopping procedures.

PERIODIC MAINTENANCE OF NEEDLES AND TRANSMISSIONS

- Disconnect the transmission and needle from the engine before performing any maintenance.
- Use only original spare parts.
- Check the needle's diameter at the point of most wear. If it falls below the minimum diameter listed for your model, replace it.
- Lubricate the transmission every 100 working hours. Apply grease by placing it in your palm, pulling the wire rope through your closed hand, and coating it evenly. The recommended amount is 12 g/m. Do not over-grease; excess grease can reach the vibrating needle or overload the motor. Do not clean the wire rope with solvent. Use MOBIL XHP 222 or equivalent high-performance grease.
- If the cable and sheath lengths do not match, have them repaired immediately to avoid major transmission failure.



- Every 300 hours of operation, changing the needle lubrication oil is advisable. To do this, disassemble the tip. Hold the needle on a bench and lightly tap the threads with a hammer; this will

help break the thread seal and loosen it. Remove the used oil and fill the tip cavity with a light, non-foaming oil, SAE20, or similar. Assemble following the recommendations in the next point. If the oil is thick and sticky, transmission grease has penetrated. You must change the seals following the steps in the next point.

7. 7. Whenever performing maintenance on the vibrating needle, follow these steps:
 - Clean all parts with solvent and allow them to dry completely.
 - Inspect the condition of the bearings, seals, and engagement finger. If grease from the transmission has entered the vibrator, the seals must be replaced. Refer to the parts list section for correct reassembly.
 - The seals are designed to retain the oil within the vibrator and prevent grease from entering. Be careful not to damage the surfaces where the seals are mounted. When the needle is removed, it is advisable to replace the seals.
 - Refill the tip cavity with non-foaming SAE 20 oil or an equivalent product. Do not use grease.
 - When reassembling the parts, install the O-rings and apply thread sealant to all threads. Tighten securely and wipe away any excess sealant. Proper fitment of all parts prevents water ingress.
8. After maintenance or service work, ensure all parts are correctly reassembled.
9. Depending on use conditions, an authorized service center should inspect the equipment at least once every 12 months—or more frequently.

STORAGE

Store the equipment in a clean, dry, and protected area when not in use for extended periods.

TRANSPORT

During transport, you must securely fasten the engine to prevent slipping, overturning, or impact damage.

Troubleshooting

ENGINE

PROBLEM	CAUSE/SOLUTION
The engine does not start	Check that the switch is in the ON position.
	Verify that there is gasoline in the tank.
	Ensure the fuel tap is open.
	Check the air lever (gasoline).
	Check that the oil level is adequate.

TRANSMISSIONS AND VIBRATED HEAD

PROBLEM	POSSIBLE CAUSES
The motor is overloaded or overheating	1. The vibrator head is over-lubricated.
	2. There is either too much or too little grease in the shaft.
	3. A seal in the poker head is broken, allowing transmission grease to enter the poker, or oil from the poker has migrated into the transmission.
	4. The movement of the poker is restricted.
	5. The transmission has kinks or knots.
	6. Transmission is in poor condition or has a damaged hose.
Bearing failure	1. There is not enough oil in the head.
	2. The motor was left running with the poker outside the concrete for an extended period.
	3. Water has entered the poker head.
	4. The vibrator housing is damaged.

Instructions for Ordering Spare Parts

INSTRUCTIONS FOR ORDERING SPARE PARTS

1. You **MUST INCLUDE THE PART CODE** IN ALL spare parts orders, as listed in the Parts List. It is also recommended that the **MACHINE MANUFACTURING NUMBER** be included.
2. The identification plate with the serial number and model description is on the belt cover plate.
3. Provide complete and accurate shipping instructions, including the consignee's preferred route, address, and full name.
4. Do not return spare parts to the factory without written permission. All authorized returns must be sent freight prepaid.

INSTRUCTIONS FOR REQUESTING GUARANTEES

1. The warranty is valid for 1 year from the machine's purchase date. It covers parts with manufacturing defects only. Under no circumstances does it cover breakdowns resulting from misuse of the equipment.
2. For all warranty requests, **THE MACHINE MUST BE SENT TO ENARCO, SAU, OR AN AUTHORIZED WORKSHOP**, with the address and full name of the consignee indicated.
3. The SAT department will confirm whether the warranty is accepted and, if requested, will issue a technical report.
4. No warranty will be granted for any equipment previously handled by personnel not affiliated with Menegotti North America, LLC.

Recommendations for Use

1. Select the appropriate type of vibrator according to the dimensions of the formwork, the free space between the reinforcements, and the consistency of the concrete. See the section on how to select the vibrator. A spare vibrator is always recommended.
2. Before starting, ensure the vibrator is in good condition and functioning correctly. Use the recommended protective and safety equipment.
3. Pour the concrete into the structure, avoiding excessive drop height. The concrete should be poured evenly into the mold or formwork. Each layer should be no thicker than 50 cm, with a recommended range between 30 and 50 cm.
4. Insert the vibrator vertically into the concrete without moving it horizontally. Do not use the vibrator to push or drag the concrete. Insert the vibrator at regular intervals, spaced 8 to 10 times the diameter of the vibrator. Monitor the concrete to determine the effective radius of action. Each insertion area should overlap with the previous one to avoid still zones. The needle should penetrate approximately 10 cm into the last layer to ensure proper bonding. Avoid delays between layers to prevent cold joints. Do not force the vibrator into the concrete; it may become caught on the reinforcement.
5. Vibration time at each point will vary depending on the concrete type, vibrator size, and other factors. Typical vibration time ranges from 5 to 15 seconds. Less time is required for more fluid concrete. Excessive vibration may lead to segregation or disintegration of the concrete. Concrete is considered well-vibrated when the surface becomes compact and shiny and air bubbles stop rising when the surface becomes compact and shiny, and air bubbles no longer emerge. A change in the noise produced

by the vibrator is also noticeable. Many structural defects result from a rushed and disorganized vibration process.

6. You must not press the vibrator against reinforcement or formwork. You must maintain it at a distance of at least 7 cm from the walls.
7. The needle should be slowly removed from the concrete using up-and-down movements, allowing the concrete time to fill the hole left by the tube. The vibrator should be withdrawn at approximately 8 cm per second. Remove it quickly when it is almost out to avoid disturbing the surface.
8. To vibrate slabs, tilt the needle slightly to increase its surface contact with the concrete mass.
9. Do not leave the vibrator running outside of the concrete for extended periods. If the vibrator stops working, shut it off. Never use the vibrator to move or drag concrete horizontally.
10. Always follow the vibrator maintenance instructions.

To achieve a solid concrete structure, starting with the right materials and performing consistent vibration throughout the mass is essential.

Product Warranty

The warranty is non-transferable and is valid under the specified conditions from the date of equipment purchase, provided the first end user presents the original sales invoice. At the time of delivery, the customer must receive product information and technical guidelines following this manual.

This warranty does not cover defects caused by misuse, carelessness, negligence, recklessness, or improper handling. It also does not apply to repairs or modifications made to any part or component of the

equipment.

Excluded from coverage are assemblies or repairs carried out by anyone other than the factory or an authorized Technical Assistant; use of the equipment outside of its intended specifications; mechanical or electrical overloads; phase failures; operation in unsuitable environments; incorrect voltage or frequency; improper lubrication; and damages caused by accidents such as floods, strong winds, fires, landslides, or issues related to transportation.

Removing or altering the original serial number labels affixed to the product will void the warranty. To honor coverage, you must present the sales invoice and the Warranty Certificate. The warranty is limited to repairing or replacing defective components, as determined by an Authorized Menegotti Technical Assistant and verified in advance by the factory. An Authorized Technical Assistant must carry out all repair or replacement work under this warranty. The buyer is responsible for any transportation costs to and from the service provider. Labor and replacement parts are free of charge per this warranty's terms.

This warranty supersedes any other express or implied warranties. It releases the company from any additional liability related to the product.

MENEGOTTI After Sales and Technical Assistance departments.

Term of Warranty

By this CERTIFICATE provided to the original purchaser, Menegotti guarantees this product against manufacturing defects for 24 (twenty-four) months, counted from the invoice issue date of the first end consumer. This warranty does not include components subject to normal wear, such as bearings, steel cables, electrical plugs, gears, and motor brushes.

This warranty covers replacing parts and repairs resulting from manufacturing defects, as confirmed by the factory or an Authorized Technical Assistant. The warranty will be void in the case of damage caused by accidents, natural events, use outside the intended application, connection to improper electrical supply, exposure to significant voltage fluctuations, or if the equipment has been opened by persons or workshops not authorized by Menegotti.

The consumer is responsible for freight expenses for transporting the product to and from the technical assistant or factory. For machines that include a motor, this warranty covers internal manufacturing defects in the motor only. Defects NOT covered include Overloading due to missing or excessive electrical phase, Use of voltage outside the specified range, Broken or crushed casing caused by negligent transport or storage, Incorrect coupling or energizing, Improper use or incorrect installation.

In agreement with these terms,

Customer: _____

Model: _____

Number of Series: _____

City: _____

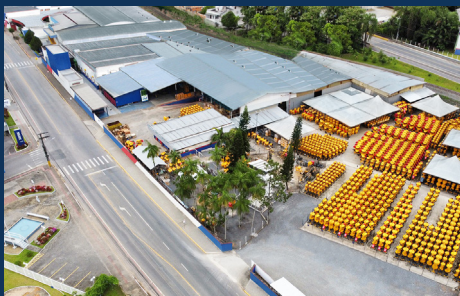
Date: _____

Customer

Menegotti Authorized Service

MGT

NORTH AMERICA 



Menmaq Unit

Erwino Menegotti, 381 - Água Verde
Jaraguá do Sul - SC - 89254-000



Mentec Unit

José Theodoro Ribeiro, 2399 - Ilha da Figueira
Jaraguá do Sul - SC - 89258-468



Menfer Unit

Saudade, 186 - Seminário
Corupá - SC - 89278-000



MGT North America Headquarters

248 E Crogan St STE 301 - Lawrenceville - GA
30046 - United States

mgtamerica.com