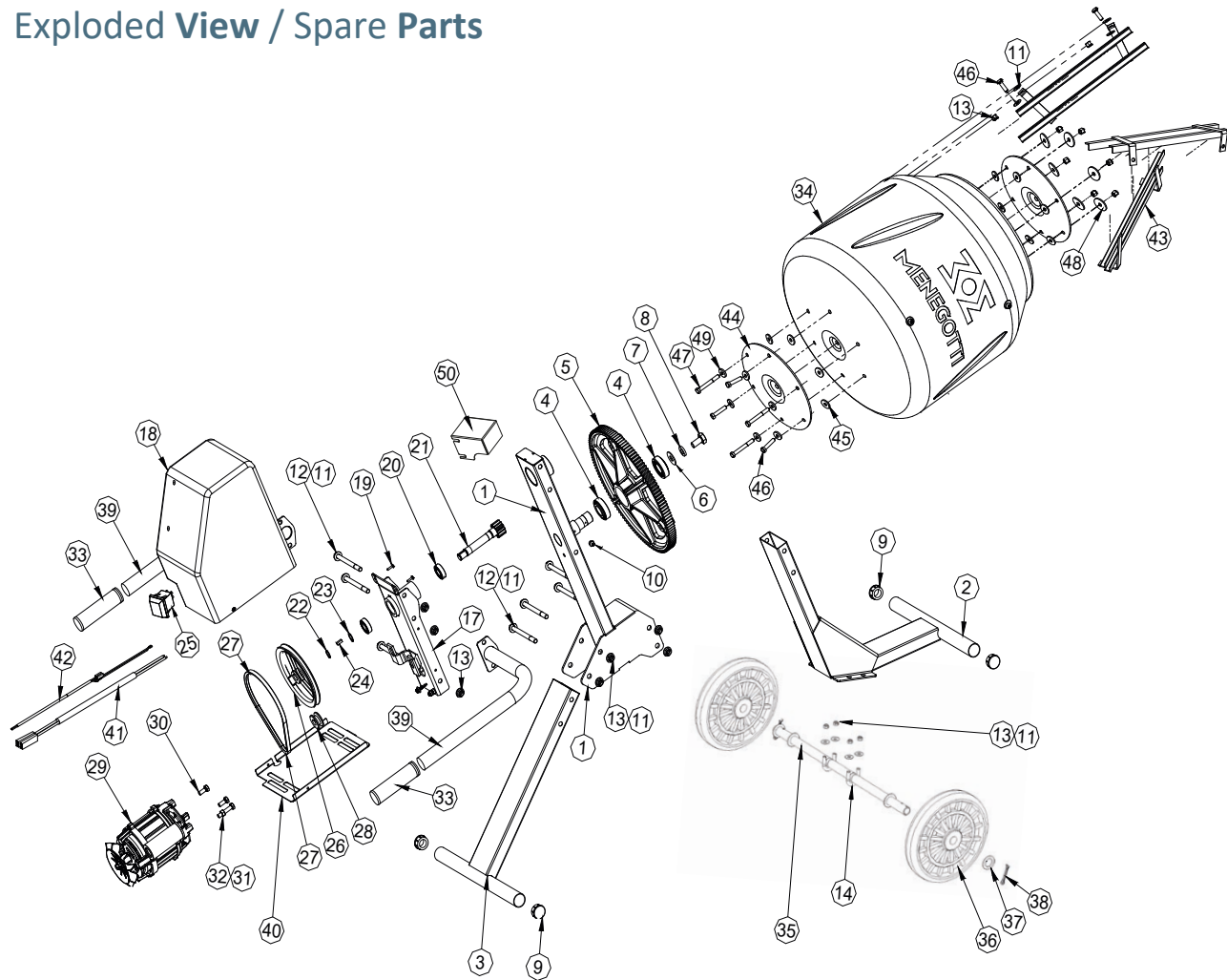


Exploded View / Spare Parts



POS.	DESCRIPTION	QTY.	CODE	DRAWING
1	Central Chassis Assembly	1	33110209	3110209
2	Front Chassis Assembly	1	33112195	3112195
3	Rear Chassis Assembly	1	33112192	3112192
4	Bearing 30205	2	22020603	-
5	Gear Rack Z128 / M2.5	1	2124006	2124006
6	Flat Washer 3/8"	1	21030250	-
7	Spring Washer 1/2"	1	21030164	-
8	Hexagonal Screw 1/2"	1	21010409	-
9	Plug Ø1.1/4"	4	24110111	4122426
10	Grease Cup M10	1	24040152	-
11	Flat Washer 3/8"	30	21030251	-
12	Hexagonal Screw 3/8"	7	21010250	-
13	Self-locking Hexagonal Nut 3/8"	20	21021059	-
14	Hook "U"	2	21012483	4122427
17	Engine Box Support	1	33108456	3108456
18	Engine Box	1	24110108	3108008
19	Screw 5x14mm	2	21011023	-
20	Bearing 6003	2	22020203	-
21	Pinion Assembly	1	31020177	3123009
22	Elastic Ring Ø15	1	21060113	-
23	Elastic Ring Ø17	1	21060115	-
24	Key 5x5x14mm	1	21130120	-
25	ON/OFF Switch	1	26100412	-
26	Pulley	1	29110217	4109045
27	V-Belt 3L - 230	1	22010360	-

POS.	DESCRIPTION	QTY.	CODE	DRAWING
28	Pulley Engine	1	31090265	4122374
29	Single-phase Engine 1/2CV 60Hz 115/230V	1	23014623	-
30	Hexagonal Screw M8x20	2	21012931	-
31	Hexagonal Screw M8x45	1	21012814	-
32	Hexagonal Nut M8	1	21021105	-
33	Handle	2	24070171	4122390
34	Drum 130L	1	3107139	3107139
35	Axle Assembly (without wheels)	1	33115100	3115100
36	Rubber Wheel	2	3115109	3115109
37	Flat Washer (wheel) 28x45x2,7	2	21030336	-
38	Cotter Pin	2	21050106	-
39	Handlebar	2	32040077	4122423
40	Box Bottom	1	32040228	3108399
41	Single-phase Cable	1	26010435	4122410
42	Assembly Electric Cables without Plug	1	26010421	4127011
43	Blades Assembly	3	33107138	3107138
44	Drum Reinforcement	2	34107159	4107159
45	Drum Rubber Washer	12	4122450	4122450
46	Hexagonal Screw 3/8" x 1.3/4"	6	21010929	-
47	Hexagonal Screw 3/8"x3"	3	21010126	-
48	Washer	6	4107003	4107003
49	Flat Washer 3/8"	6	21030204	-
50	Pinion Guard	1	33122420	3122420

Product Warranty

The warranty is not transferable under the conditions and within the prescribed period and will be valid from the date of purchase of the equipment, through presentation of the sales invoice to the first end consumer. At the time of delivery of the equipment, the customer must receive the information and technical guidelines for the equipment as per the content of this manual.

Therefore, defects caused by mistreatment, carelessness, negligence, recklessness or malpractice, are not covered by this warranty, nor are any repairs or alterations of any part and/or piece of equipment. Also not covered is any assembly of the parts by any party other than the factory itself or Technical Assistant, application outside the specification, mechanical or electrical overloads or phase failure, use in an environment for which it was not designed, incorrect voltages of frequencies, incorrect lubrication, damage caused by accidents of any kind, such as floods, strong winds, fires, landslides or resulting from transportation.

The removal or alteration of the serial numbers originally placed on the product void the warranty, which must be presented on the sales invoice and the Warranty Certificate for the equipment in question.

The warranty assumed is limited to the repair, spare parts or parts assembly of the set of parts, in which the review is conducted by an Authorized Menegotti Technical Assistant and authorized in advance by the Factory, to double check the existence of the manufacturing defect. This repair or exchange will be made by an Authorized Technical Assistant, with the buyer bearing the risks or costs of transportation to and from the Technical Assistant, with the labor and replaced parts being free, under the terms of this warranty.

This supersedes any other warranty, express or implied as well as any and all liability or responsibility of our company concerning the above product.

MENEGOTTI After Sales and Technical Assistance departments.

Warranty Term

By the present CERTIFICATE provided from original purchaser, Menegotti guarantees this product against manufacturing defects, for a period of 12 (twelve) months, counted from the invoice issue date of the first final consumer. The components of daily use such as: bearings, clutch disc, gears, tires, brake shoes, etc. are not included in the warranty.

This warranty includes spare parts and repair against manufacturing defects duly verified by the factory or Authorized Technical Assistance. The warranty for this product will be void if it suffers damage caused by accidents, natural events, application outside the specification, or in the case of alterations or repairs by a person or workshop not authorized by Menegotti. The product freight charges, including the technical assistant or factory, are borne by the consumer.

If the equipment is purchased with the electric engine warranty covers defects arising from the internal engine manufacture. Not covered by warranty defects of: broken or crushed shell due to carelessness in transporting/or storage, energization of the motor coupling or out specification defects, general misuse and /or incorrect installation, overcharging due to lack or excess of phase and use of voltage out of the specification.

Aware of this term,

Customer: _____
Model: _____ **Serial Number:** _____
City: _____ **Date:** _____

Customer

Menegotti Authorized Service



Menegotti

GROUP

MENEGOTTI
HANDLING



Erwino Menegotti, 381 - Água Verde
Jaraguá do Sul - SC - 89254-000

MENEGOTTI
CONSTRUCTION



José Theodoro Ribeiro, 2399 - Ilha da Figueira
Jaraguá do Sul - SC - 89258-468

MENEGOTTI
HOUSE & GARDEN



Saudade, 186 - Seminário
Corupá - SC - 89278-000



248 E Crogan St STE 301 - Lawrenceville - GA
30046 -

grupomenegotti.com